

VARNDEAN SCHOOL FOR BOYS, BRIGHTON
1951

The Dramatic Society presents

HENRY IV, PART I

by

WILLIAM SHAKESPEARE

PROGR

CHARACTERS

(in order of appearance)

LORD JOHN OF LANCASTER, <i>younger son to King Henry IV</i>		J. B. Ware
THE EARL OF WESTMORELAND - - - -		D. J. Davis
A HERALD - - - - -		M. C. Garry
ANOTHER HERALD - - - - -		T. N. Wiltshire
KING HENRY IV - - - - -		T. F. Emery
SIR WALTER BLUNT - - - - -		M. J. A. Clarke
HENRY, PRINCE OF WALES - - - - -		B. C. Warden
SIR JOHN FALSTAFF	} <i>friends to Prince Henry</i> {	- N. B. Heaven
POINS		A. R. E. Mancktelow
THOMAS PERCY, <i>Earl of Worcester</i> - - - -		G. Clarke
HENRY PERCY, <i>Earl of Northumberland</i> - - - -		D. E. Marmery
HENRY PERCY, surnamed HOTSPUR, <i>son to Northumberland</i>		R. R. Stone
BARDOLPH	} <i>friends to Prince Henry</i> {	R. M. Lyne
PETO		D. J. Minter
GADSHILL		B. C. Parsons
TRAVELLERS -	D. J. Mars, D. G. W. Vallins, B. K. Power, H. D. Hughes	
FRANCIS, <i>a tapster's boy at 'The Boar's Head' tavern</i> - -		T. G. Burns
MISTRESS QUICKLY, <i>Hostess of 'The Boar's Head' tavern</i> -		W. F. Dorkings
SHERIFF - - - - -		A. E. Hart
EDMUND MORTIMER, <i>Earl of March</i> - - - -		J. B. Wells
OWEN GLENDOWER - - - - -		G. W. Morgan
ARCHIBALD, <i>Earl of Douglas</i> - - - - -		D. W. F. Nicoll
A MESSENGER - - - - -		T. A. Whitley
SIR RICHARD VERNON, <i>friend to Hotspur</i> - - - -		G. F. Clarke

§

<i>Producers</i> - - - - -	J. A. Stone, M. Wylie, G. K. Green
<i>Scenery</i> - - - - -	S. E. Armstrong, M. Bruce
<i>Lighting</i> - - - - -	H. G. Hobdell, K. L. Morphew
<i>Music</i> - - - - -	R. W. K. Taylor
<i>Seating</i> - - - - -	P. A. Gasper
<i>Properties and Effects</i> - - - - -	M. M. Thompson, G. Agar
<i>Costumes</i> - - - - -	Messrs. Charles H. Fox, London
<i>Make-up</i> - - - - -	Messrs. B. & H. Drury, Brighton

A M M E

ACT I

- SCENE I* London. The palace
SCENE II London. The palace
SCENE III The highway, near Gadshill

INTERVAL

ACT II

- SCENE I* Eastcheap. 'The Boar's Head' Tavern
SCENE II Bangor. The Archdeacon's house
SCENE III London. The palace
SCENE IV Eastcheap. 'The Boar's Head' Tavern

INTERVAL

ACT III

- SCENE I* The rebel camp near Shrewsbury
SCENE II The King's tent at Shrewsbury
SCENE III The rebel camp near Shrewsbury
SCENE IV A plain between the camps
SCENE V The same
SCENE VI The King's tent at Shrewsbury

Note: The curtain will fall on the last act at approximately 9.15 p.m. on Wednesday and 10.15 p.m. on the other nights. Extra 'buses have been arranged on the Braybon Avenue—Old Steine route for the end of all performances.

Varndean Maintain a Tradition

THE Varndean School for Boys' Dramatic Society have had no trouble in packing the Stainer Hall for their winter offering of "Henry IV, Part One," the last performance of which is to-night.

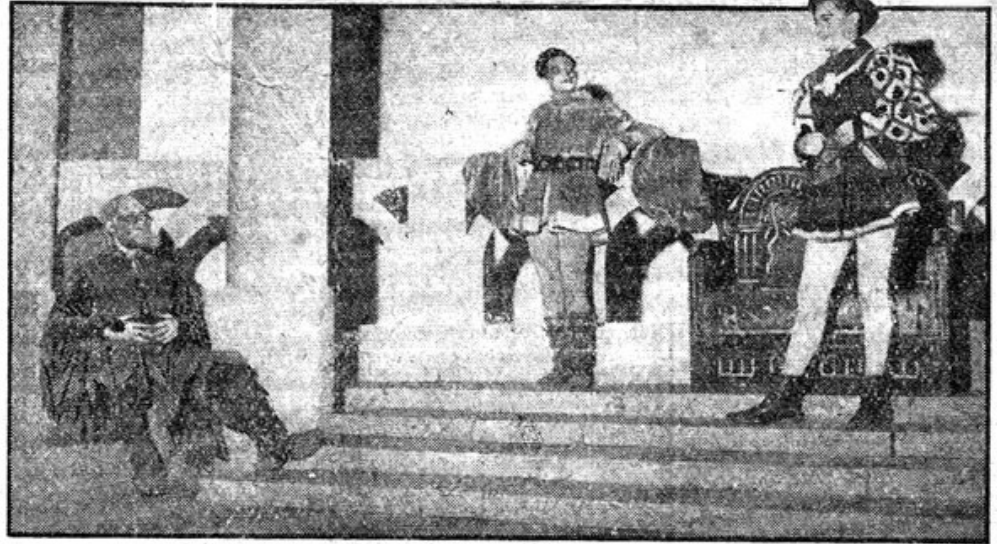
Even those who are not Shakespearean fans could scarcely fail to appreciate the magnificent acting of the principals—B. C. Warden as Henry, Prince of Wales, and N. B. Heaven as Sir John Falstaff.

For Warden this is his first male lead. He is a fine actor, who not only knows his lines thoroughly, the mood of the play and the correct inflection required by each word, but he also is happy in his important rôle.

He lives the character of Henry and does not, as is all too frequently the case, say the words attributed to Henry while remaining simply B. C. Warden.

Difficult Character

Falstaff, in any circumstances, is a difficult character to play. But Heaven carries his considerable responsibilities without apparent effort. He deserves every praise for his remarkable performance. He maintains a blustering good-humoured atmosphere throughout; he receives with equanimity the constant jibes; he talks his way out of many a critical situation without hesitation; he never over-acts—and the character lends itself to this trap. He is so convincing that one won-



A scene from Varndean Boys' presentation of Shakespeare's "Henry IV" (Part I). Left to right: Falstaff (played by N. B. Heaven), Prince Hal (B. C. Warden), and Poins (A. R. E. Mancktelow).

ders what kind of a person Heaven is off-stage.

Of the 22 other players who go to make up this first-class cast it is hardly fair to select individuals.

Some are realistic, some are shy and some are obviously just reading their lines. But there can be no doubt that they all work extremely hard and each contributes a useful "something" to the production.

T. G. Burns, as Francis, is out-

standing. He has rather a small part and there is not much for him to say, but he brings a gentle good humour to the play.

The scenery, which has been manufactured by the staff and pupils, is probably the finest seen on any amateur stage for some time. A great deal of attention is given to detail, and the general impression is one of authenticity and effectiveness.

Presentation, production, lighting and music have been carefully and skilfully prepared.

The costumes are not too extravagant and the characters wear them confidently. Varndean has a tradition for amateur productions which must be envied by many other schools. "Henry IV, Part One," produced by J. A. Stone, M. Wylie and G. K. Green, does not let that tradition down.